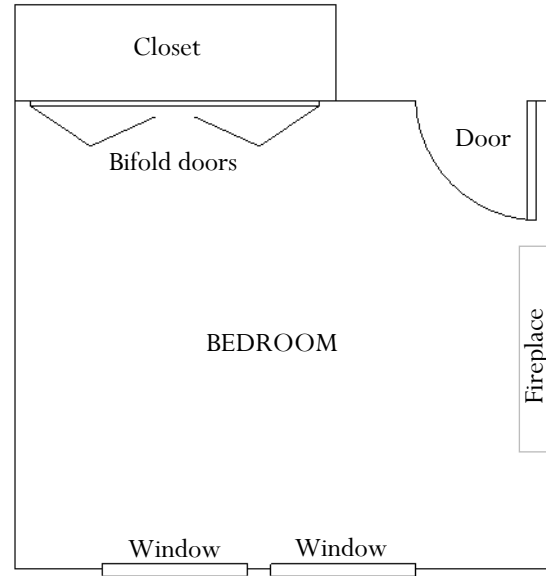


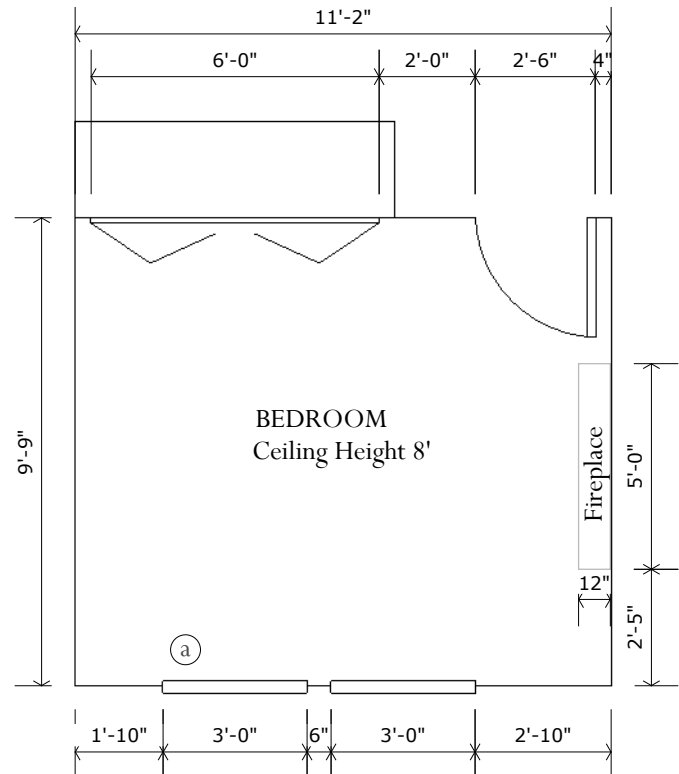
MEASURING GUIDE

In order to have an accurate design please follow our instructions on measuring

1. Draw a rough outline of your room.
 2. Indicate any doors and windows.
 3. If you have an open concept, please indicate joining rooms around and take pictures of it.
 4. Measure all the walls from corner to corner.
 5. Add any structural details to the plan such as fireplace, built ins etc. (measure a distance from the beginning of the wall to a structural detail).
 6. Take a measurements of any structural details (Width x Depth x Height). Attach pictures of it.
 7. Take a measurement of the Room height from floor to ceiling.
- (a) Windows W3' x H5'
2 equal size windows
From the floor to the bottom of the window 24"



Floor plan

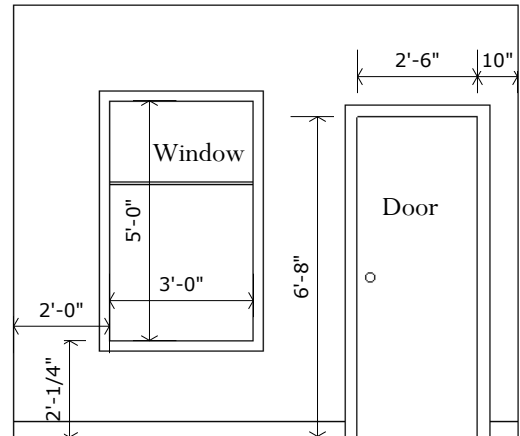


Floor plan

How to Measure Doors and Windows

Measuring Doors- indicate the Width (just the actual door opening) and direction of the opening.

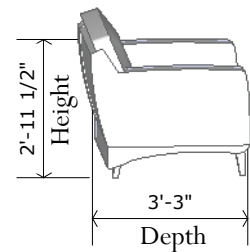
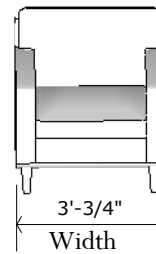
Measuring Windows - Width x Height and distance from floor to the bottom of the window not including the window trim.



How to Measure Furniture

Measure any furniture pieces (Width x Depth x Height) that would be incorporated into a new design.

Attach pictures of it.



Thank you for your cooperation; this is a very important step in our design process.